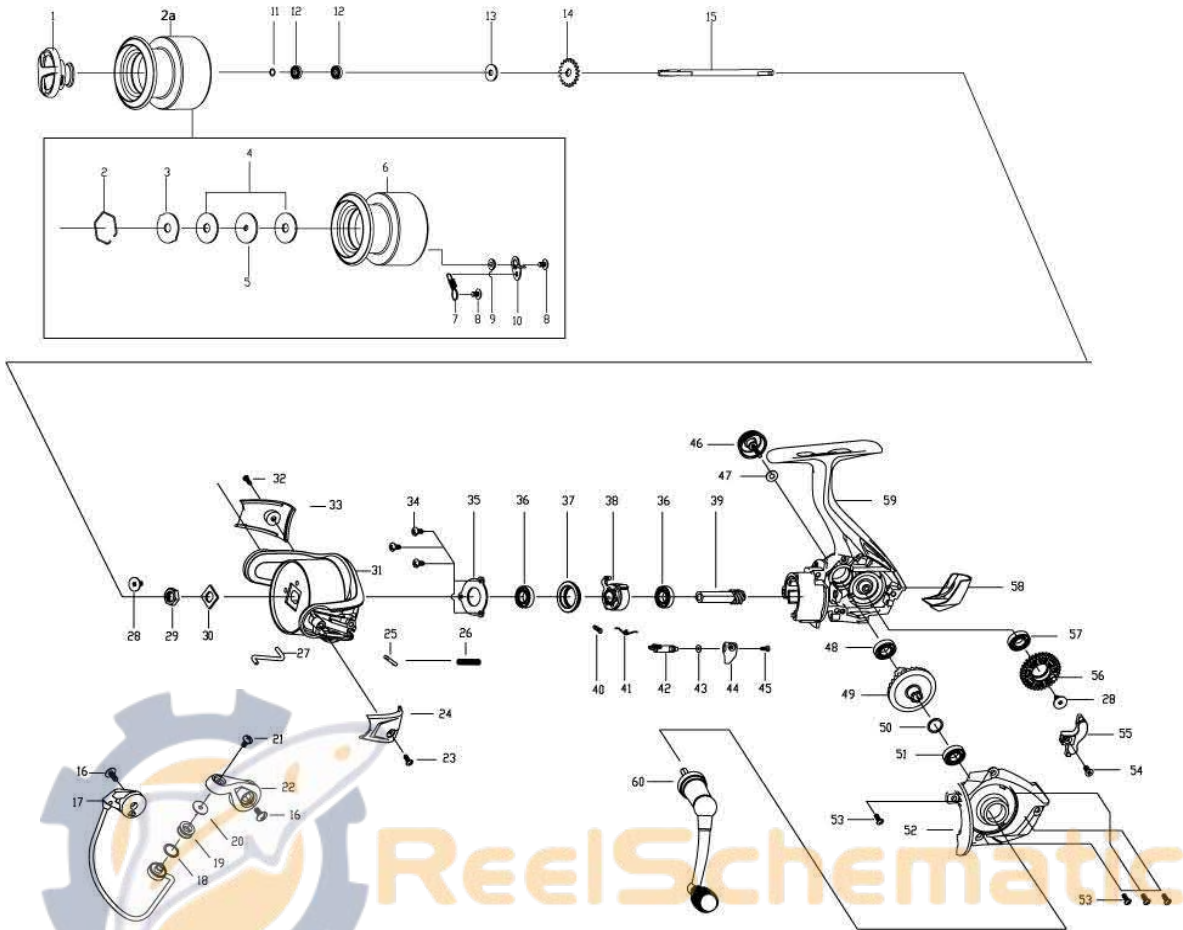


QUANTUM® Fire15



Quantum Fire15 Spinning Reel Part List

Key #	Description	Qty	Part No.	Key #	Description	Qty	Part No.
1	Drag Knob Assembly	1	KAD332-02	31	Rotor	1	
2a	Spool Assembly	1	KAD321-02	32	Screw - Bail Holder Sidecover	1	
2	Retainer Ring	1		33	Bail Holder Sidecover	1	
3	Ear Washer	1		34	Screw - Bearing Retainer	3	
4	Drag Friction Washer	2		35	Ball Bearing Retainer	1	
5	Drag Key Washer	1		36	Ball Bearing - Pinion	2	
6	Spool	1		37	Ball Bearing Holder	1	
7	Spool Clicker Spring	1		38	Anti-Reverse Bearing	1	KAD063-01
8	Screw - Clicker	1		39	Pinion Gear	1	
9	Clicker Spring Bushing	1		40	Anti-Reverse Spring	1	
10	Spool Clicker	1		41	Anti-Reverse Lever Spring	1	
11	Retainer O-Ring	1		42	Anti-Reverse Lever	1	
12	Ball Bearing - Spool	2		43	Washer	1	
13	Clicker Gear Washer	1		44	Anti-Reverse Switch	1	
14	Clicker Gear	1		45	Anti-Reverse Switch Screw	1	
15	Main Shaft	1		46	Handle Screw Cap	1	KAD054-01
16	Screw - Bail Holder	1		47	Handle Screw Cap Washer	1	KAD105-01
17	Bail Assembly	1	KAD347-01	48	Ball Bearing - Body	1	
18	Line Roller Spacer	1	KAD080-01	49	Drive Gear	1	
19	Line Roller	1	KAD004-01	50	Drive Gear Adjust Washer	1	
20	Line Roller Washer	1	KAD102-01	51	Ball Bearing - Sidecover	1	
21	Screw - Line Roller	1	KAD108-01	52	Sidecover	1	
22	Arm Lever	1	KAD007-01	53	Screw - Sidecover	3	
23	Screw - Arm Lever Sidecover	1		54	Screw - Main Shaft	1	
24	Arm Lever Sidecover	1		55	Slider	1	
25	Bail Actuator	1		56	Oscillation Gear	1	
26	Bail Spring	1		57	Bearing - Oscillation Gear	1	
27	Kick Lever	1		58	Rear Cover	1	
28	Screw	1		59	Body	1	
29	Rotor Nut	1		60	Handle Assembly	1	KAD318-01
30	Rotor Nut Washer	1					